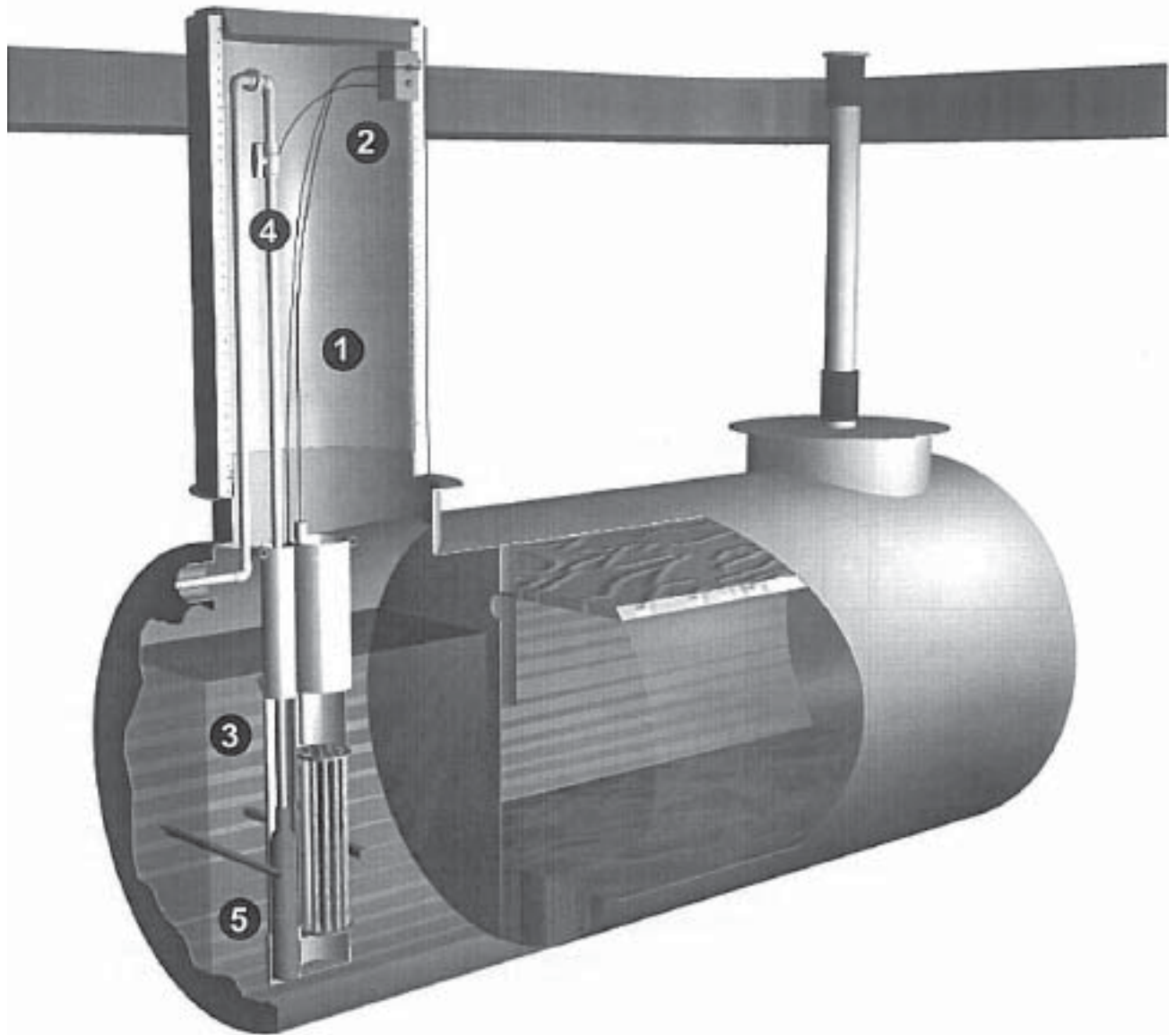




S.T.E.P. Systems

Septic Tank Effluent Pumping



The Anchorage Tank & Welding, Inc. S.T.E.P. System is a combination of a specially designed Anchorage Tank septic tank and Orenco Systems®, Inc. riser, pumps, and controls.

Effluent from the building enters the S.T.E.P. System and travels the length of the first compartment. A pump (or pumps) located in a screened pump vault near the outlet of the tank pumps the effluent to a pressurized drainfield.

Designed specially for tough Alaskan conditions, the S.T.E.P. System is available with either single or duplex pumps, in either residential or commercial configurations.

Submittal Data Sheet



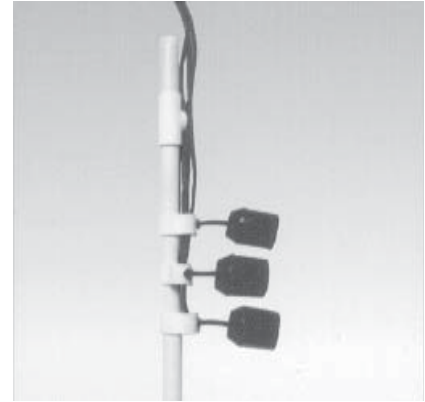
1 Riser, Lid, and Accessories

- Allow easy access to tank
- Attractive, non-skid lids
- Strong & lightweight
- Insulated with 2" urethane foam
- Standard 48" length
- Longer risers available in 12" increments
- Tamper resistant



2 Splice Box

- UL listed
- At-grade installation
- Strong & lightweight
- Completely watertight
- Provides easy access for inspection and servicing
- Covered by U.S. Patent numbers D461,870 & D445,476



3 Float Switch Assembly

- For reliable pump control
- Pilot duty or motor-rated switches
- Arrangements for any pumping situation

Your float switch assembly may only have two floats.



4 Hose and Valve Assembly

- Intelligently designed with quick disconnect unions, ball valves, and flexible hose and fittings
- Provides easy access for maintenance and servicing of the pump system
- Configurations available for deep installations and designed for Alaskan conditions



5 PF Series Effluent Pump

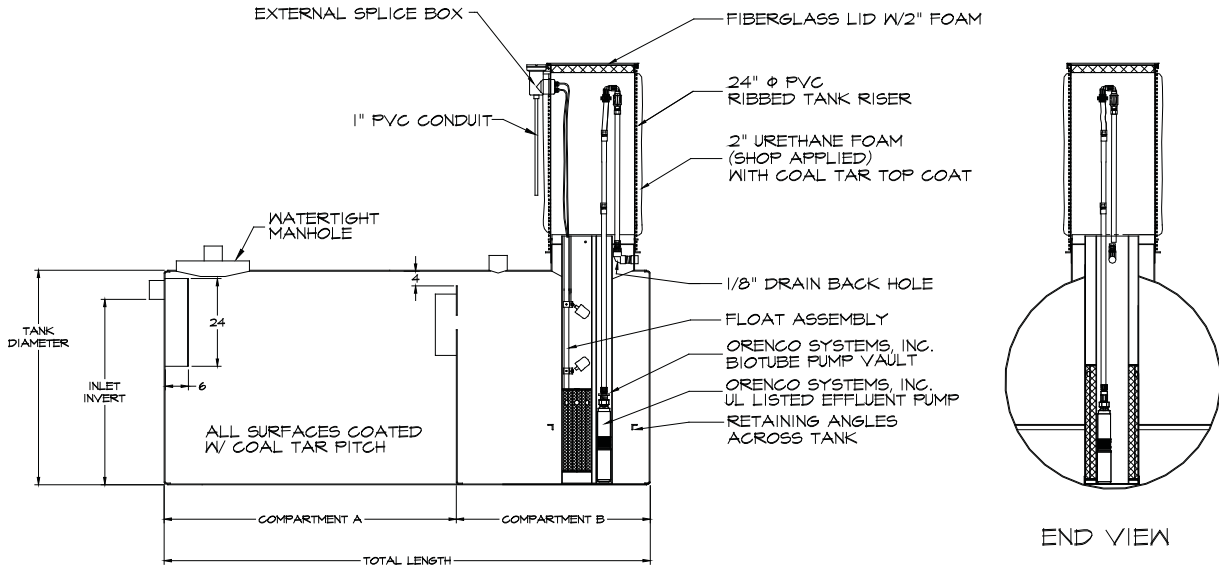
- Turbine-type effluent pump manufactured specifically for wastewater applications. UL listed
- Lightweight (about 25 pounds) yet powerful
- High pressure capacity to clear plugged orifices.
- Extremely durable and versatile



Control Panel

- UL listed
- Engineered specifically for wastewater applications
- Corrosion-proof NEMA 4X rated enclosures
- Intrinsically safe relays in commercial panels
- Models for any need

Residential Lift Stations 1,250 - 2,500 Gallon



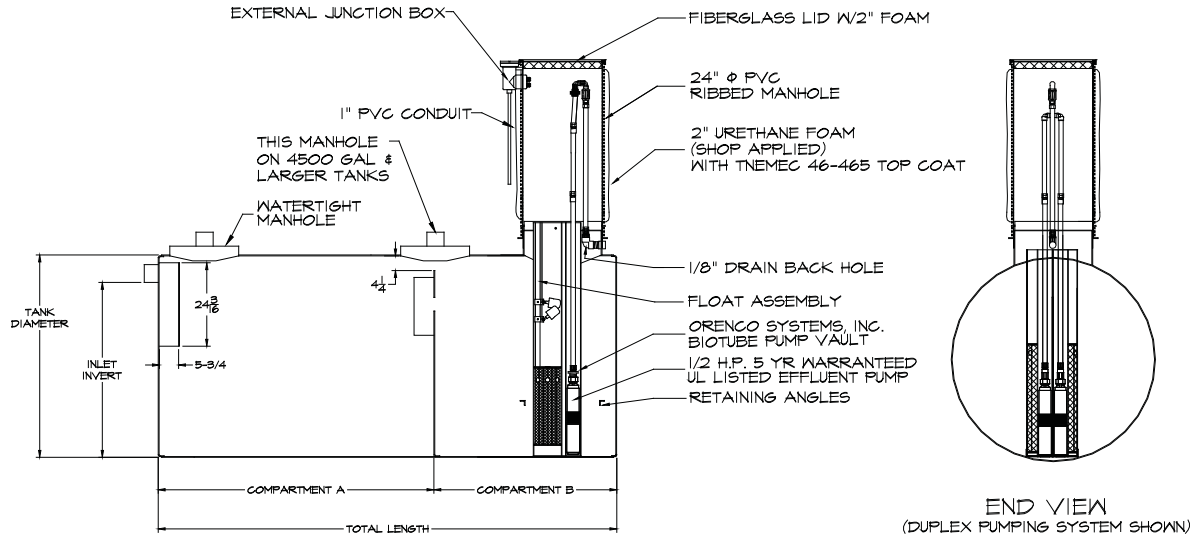
Features:

- Constructed to the requirements of the International Plumbing Code.
- Watertight manholes prevent seeping of groundwater.
- Coated inside and out with coal tar pitch.
- Custom tanks, including special interior and/or exterior coatings, are available.
- Available in Commercial configurations; single or duplex pumps.
- Dimensions and weights are approximate.
- Burial depths listed below are approved by the Municipality of Anchorage.
- Detailed *Installation, Operation, and Maintenance Manual*.



ANCHORAGE TANK MODEL NUMBER	APPROX. GALLONS	STEEL GAUGE	DIAM. (INCHES) (A)	LENGTH (FEET) (B)	LENGTH COMPT. 1 (C)	LENGTH COMPT. 2 (D)	SHIPPING WEIGHT (LBS)	MAXIMUM BURIAL DEPTH (FEET)
AT1250L	1,250	12	59	10	6'-8"	3'-4"	1,256	10
AT1500L	1,500	12	59	12	8'-0"	4'-0"	1,398	5.75
AT1500L10	1,500	10	59	12	8'-0"	4'-0"	1,573	10
AT2000L	2,000	10	59	16	10'-8"	5'-4"	1,772	6
AT2000L3/16	2,000	3/16	59	16	10'-8"	5'-4"	1,850	10
AT2500L	2,500	3/16	64	17	11'-4"	5'-8"	2,650	

Commercial Lift Stations 3,000 - 10,000 Gallon



Features:

- Constructed to the requirements of the Uniform Plumbing Code.
- Watertight manholes prevent seeping of groundwater.
- Coated inside and out with coal tar pitch.
- Custom tanks, including special interior and/or exterior coatings, are available.
- Available in single pump configurations.
- Dimensions and weights are approximate.
- Detailed *Installation, Operation, and Maintenance Manual*.



ANCHORAGE TANK MODEL NUMBER	APPROX. GALLONS	STEEL GAUGE	DIAM. (INCHES) (A)	LENGTH (FEET) (B)	LENGTH COMPT. 1 (C)	LENGTH COMPT. 2 (D)	SHIPPING WEIGHT (LBS)
AT3000L	3,000	3/16	76	15	10'-0"	5'-0"	3,508
AT3500L	3,500	3/16	76	16	10'-8"	5'-4"	3,663
AT4000L	4,000	3/16	76	18	12'-0"	6'-0"	3,757
AT4500L	4,500	3/16	76	21	14'-0"	7'-0"	4,438
AT5000L	5,000	1/4	96	17	11'-4"	5'-8"	6,937
AT6000L	6,000	1/4	96	20	13'-4"	6'-8"	7,744
AT7000L	7,000	1/4	96	24	16'-0"	8'-0"	8,551
AT7500L	7,500	1/4	96	25	16'-8"	8'-4"	9,088
AT8000L	8,000	1/4	96	27	18'-0"	9'-0"	9,626
AT10000L	10,000	1/4	96	34	22'-8"	11'-4"	11,509