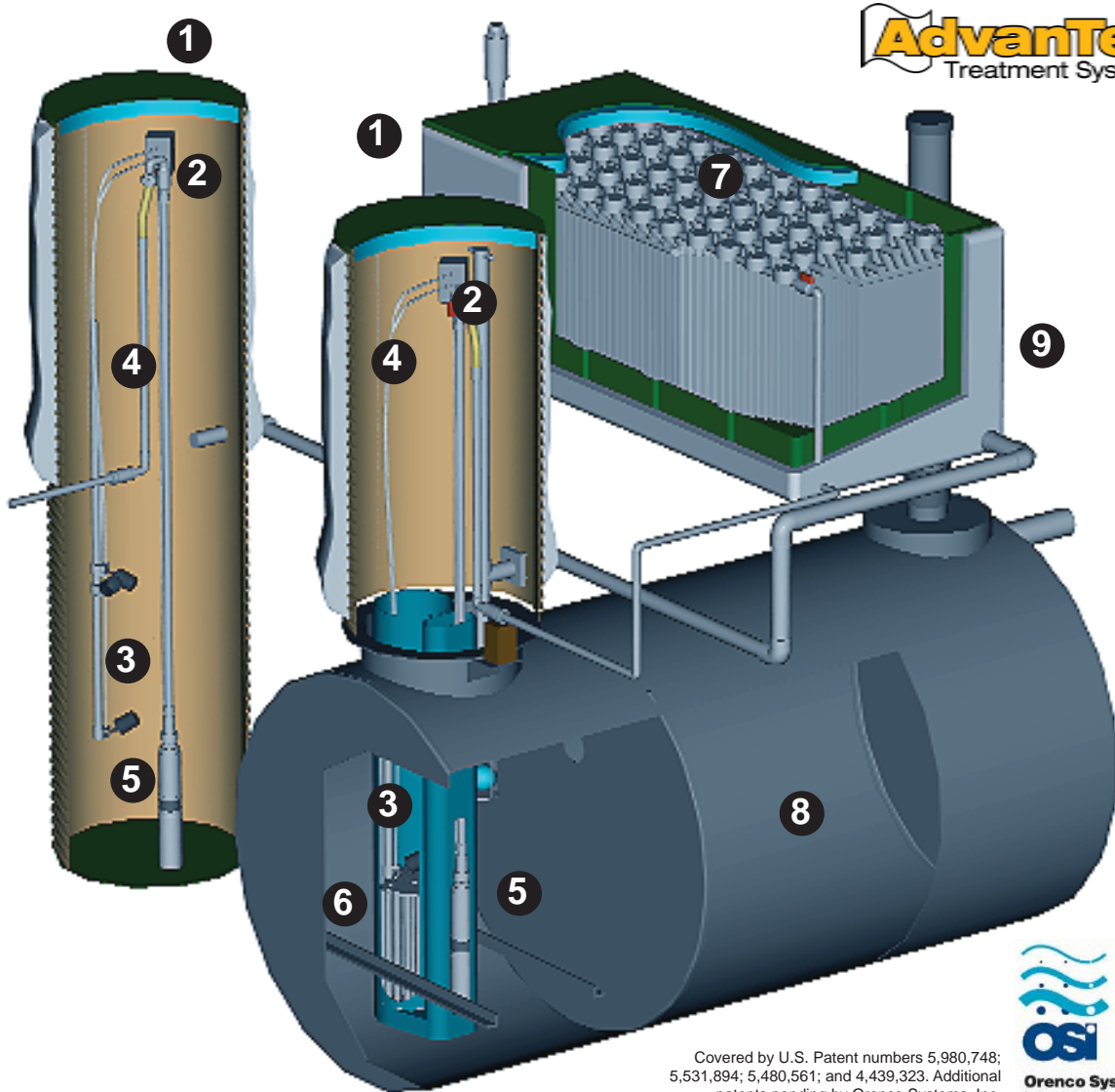




# Residential AdvanTex® Treatment using a Steel Tank



Covered by U.S. Patent numbers 5,980,748; 5,531,894; 5,480,561; and 4,439,323. Additional patents pending by Oresco Systems, Inc.



## Outstanding Wastewater Treatment

This system is a combination of a steel septic tank with Oresco Systems, Inc. AdvanTex® filter and pump. Here's how it works: Effluent from the building enters the tank and travels the entire length of the tank. A pump located in a Biotube® Pump

Vault near the outlet end of the tank pumps the filtered effluent up to a distribution manifold in the top of the AdvanTex Filter. This manifold evenly distributes the effluent over the surface of the filter media, where it trickles down through the media and back into the septic tank.

There, it flows back to the pump, completing one cycle. Wastewater is circulated several times through the AdvanTex Filter media. When the tank is full, the filtered effluent then flows to a significantly reduced drainfield.

# Submittal Data Sheet



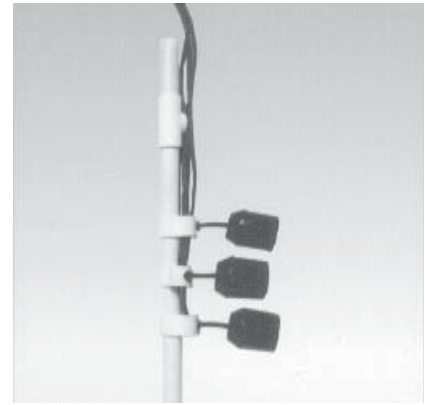
## 1 Riser, Lid, and Accessories

- Allow easy access to tank
- Attractive, non-skid lids
- Strong & lightweight
- Insulated with 2" urethane foam
- Standard 48" length
- Longer risers available in 12" increments
- Tamper resistant



## 2 Splice Box

- UL listed
- At-grade installation
- Strong & lightweight
- Completely watertight
- Provides easy access for inspection and servicing
- Covered by U.S. Patent numbers D461,870 & D445,476



## 3 Float Switch Assembly

- High Level Alarm
- Timer Override
- Low Level / Clogged Filter



## 4 Hose and Valve Assembly

- Intelligently designed with quick disconnect unions, ball valves, and flexible hose and fittings
- Provides easy access for maintenance and servicing of the pump system
- Configurations available for deep installations and designed for Alaskan conditions



## 5 PF Series Effluent Pump

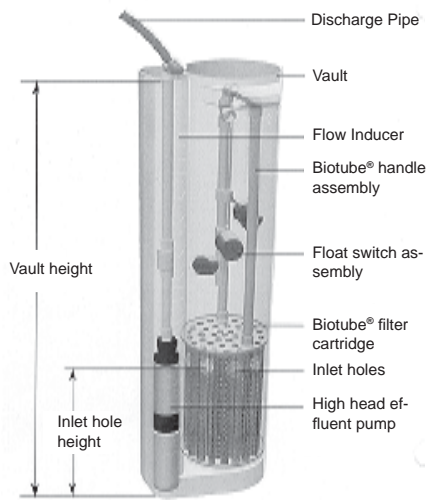
- Turbine-type effluent pump manufactured specifically for wastewater applications. UL listed
- Lightweight (about 25 pounds) yet powerful
- High pressure capacity to clear plugged orifices.
- Extremely durable and versatile



## Control Panel

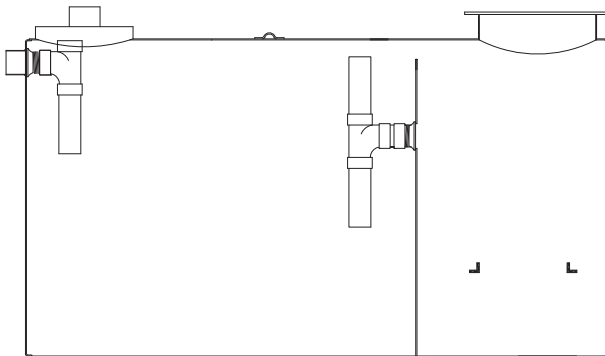
- UL listed
- Engineered specifically for AdvanTex applications
- Corrosion-proof NEMA 4X rated enclosures
- Allows for remote monitoring of the system via telephone line or the home's internet system.

# Submittal Data Sheet



## 6 Biotube® Pump Vault

- Composed of highly durable, molded polyethylene
- For use with Orenco 4" Submersible Effluent Pumps
- Float Stem: Sched. 40 PVC
- Covered by U.S. Patent numbers 4,439,323 and 5,492,635



## 8 Steel Tank

- Thicker material than traditional steel septic tanks.
- Welded and sandblasted inside & out
- Special plastic coating inside & out.



## 7 Distribution Manifold

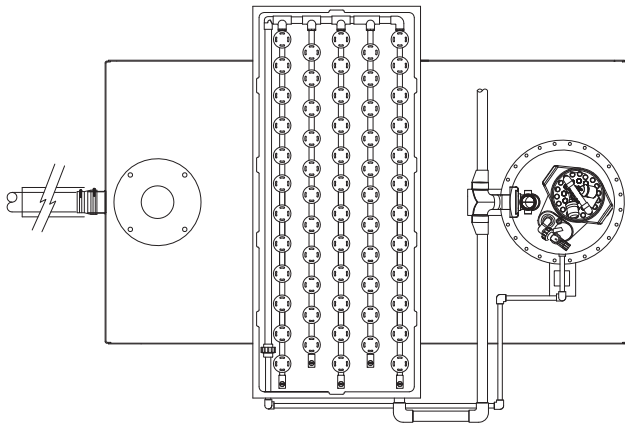
- Distributes effluent evenly over filter media



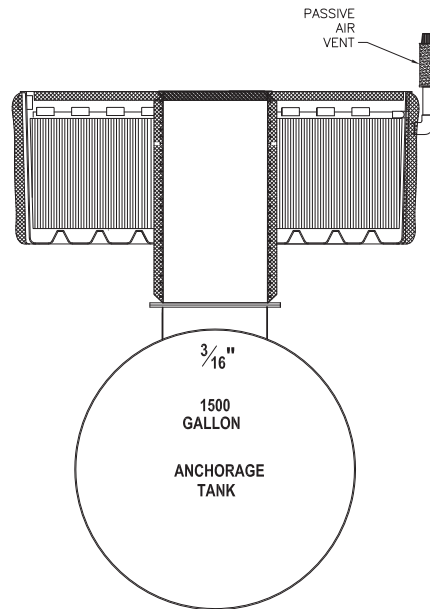
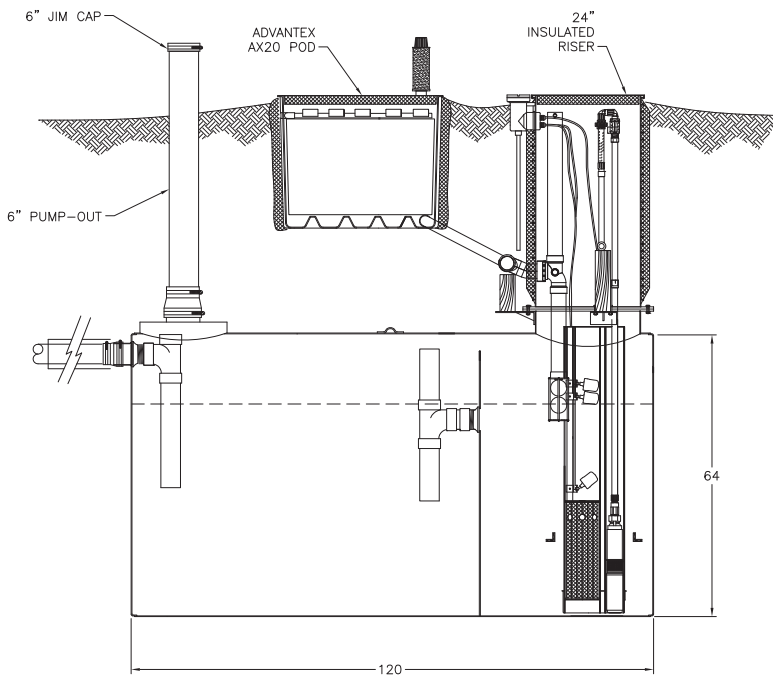
## 9 AdvanTex® Filter

- Preassembled with distribution manifold and media already in place.
- Insulated for tough Alaskan conditions.
- Sturdy, tamper-proof lids provide access to the entire filter media for easy maintenance.
- Gas shocks keep the lid open for single-person maintenance.

# Submittal Data Sheet



Typical System for a 3-4 bedroom home



## Features:

- VeriComm control panel for remote system monitoring by us.
- Monitoring & Maintenance Agreement for the life of the system.
- Authorized Installers and Service providers.
- Pump(s) operate on 110V power, averages 3kw-hr/day.
- Custom tanks for larger homes are available.
- Approved by the Municipality of Anchorage.

