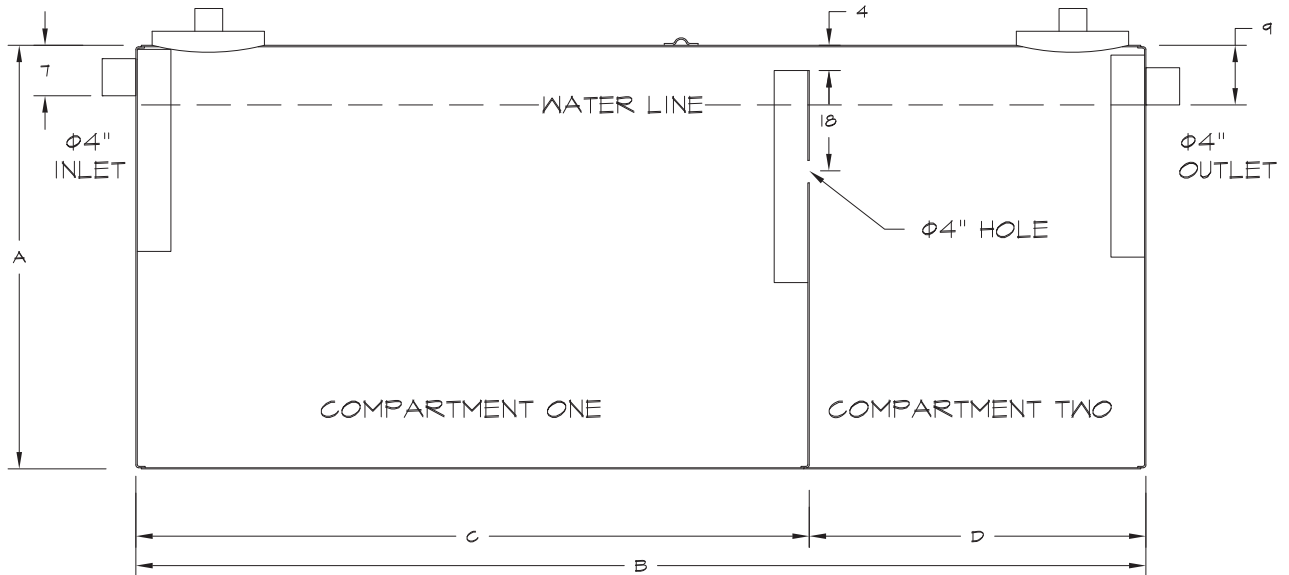




Steel Septic Tanks

1,000 - 4,000 Gallon



Features:

- Constructed to the requirements of the International Plumbing Code.
- Watertight manholes prevent seeping of groundwater.
- Coated inside and out with coal tar pitch.
- Custom tanks, including special interior and/or exterior coatings, are available.
- Dimensions and weights are approximate.
- Burial depths for 1,000 - 2,000 gallon tanks listed below are approved by the Municipality of Anchorage.

ANCHORAGE TANK MODEL NUMBER	APPROX. GALLONS	STEEL GAUGE	DIAM. (INCHES) (A)	LENGTH (FEET) (B)	LENGTH COMPT. 1 (C)	LENGTH COMPT. 2 (D)	SHIPPING WEIGHT (LBS)	MAXIMUM BURIAL DEPTH (FEET)
AT1000S	1,000	12	59	8	5'-4"	2'-8"	927	10
AT1250S	1,250	12	59	10	6'-8"	3'-4"	1,061	10
AT1500S	1,500	12	59	12	8'-0"	4'-0"	1,203	5.75
AT1500S10	1,500	10	59	12	8'-0"	4'-0"	1,377	10
AT2000S	2,000	10	59	16	10'-8"	5'-4"	1,772	6
AT2000S3/16	2,000	3/16	59	16	10'-8"	5'-4"	1,850	10
AT2500S	2,500	3/16	64	17	11'-4"	5'-8"	2,650	
AT3000S	3,000	3/16	76	15	10'-0"	5'-0"	3,508	
AT3500S	3,500	3/16	76	16	10'-8"	5'-4"	3,663	
AT4000S	4,000	3/16	76	18	12'-0"	6'-0"	3,757	